

# CECIL SOIL CONSERVATION DISTRICT

CELEBRATING 75 YEARS

## 2019 ANNUAL REPORT

### TEAMWORK

**"Coming together is a  
beginning,  
staying together is  
progress,  
and working together is  
success."**

**- Henry Ford**

105 Chesapeake Blvd  
Suite B-3  
Elkton, Maryland 21921

410-398-4411, ext. 3  
[www.cecilscd.com](http://www.cecilscd.com)



### Mission Statement

**The mission of the Cecil Soil Conservation District is to provide the community with information, education, and technical assistance in conserving the county's natural resources.**

### Vision Statement

**The vision of the Cecil Soil Conservation District is to be the recognized leader in promoting voluntary conservation and sustainable land use in Cecil County.**





## Message from the District Manager

BY CHRIS BROWN

2019 has proven to be another great year in conservation for the Cecil Soil Conservation District as well as for all those who live, work, and play within Cecil County. The CSCD has continued working diligently providing information, education, and technical assistance to all those who request it. The implementation of conservation on the ground could not be done without our dedicated partners, cooperators, and friends with whom we work. The landowners, farmers, and residents of Cecil county who voluntarily implement Best Management Practices are on the front lines of providing soil and water quality to Cecil County and the Chesapeake Bay as a whole. I would like to thank all of you that work closely with us to make a real change in the conservation of the natural resources within our community.

CSCD continues to provide programs for Education and Outreach, Conservation Planning, Erosion and Sediment Control Plan review, and support for popular programs such as Cover Crop, MACS, and EQIP. While our commitment to these great programs has not wavered, we are also fostering relationships to extend our message into new venues promoting many types of Best Management Practices, resource conservation, and water quality. We are looking forward to 2020 and a new decade with great optimism and hope to expand opportunities and relationships to spread this message of Conservation to an even wider audience. Thank you to all whom provide us with support and believe in our message. We are excited to see what is to come in the next year.

## 2018 OUTSTANDING DISTRICT

**The Cecil Soil Conservation District was awarded the Mid Atlantic Farm Credit Outstanding District for 2018.**

**(pictured left to right), Van Funk, Jonathan Quinn, Bruce Yerkes, Patty Pierce, Chris Brown and the Maryland Association of Soil Conservation Districts President, Charles Rice.**



# BMP'S FY2019 - 127 INSTALLED

Access Control	10.5 AC.
Access Road	7,866.90 FT.
Animal Trails and Walkways	699.0 FT.
Channel Bed Stabilization	1,021.0 FT.
Comprehensive Nutrient Management	1.0 NO.
Conservation Cover	19.0 AC.
Conservation Crop Rotation	1,508.2 AC.
Cover Crop	13,877.9 AC.
Critical Area Planting	5.0 AC.
Critical Area Planting - Construction	1.5 AC.
Critical Area Planting- HEL	7.8 AC.
Diversion	480.0 FT.
Filter Strip	37.4 AC.
Forest Harvest Management	7.0 AC.
Forest Stand Improvement	18.0 AC.
Grade Stabilization Structure	4.0 NO.
Grassed Waterway	5.3 AC.
Heavy Use Area Protection	0.4 AC.
Hedgerow Planting (Grass)	280.0 FT.
Hedgerow Planting (Trees)	1,259.0 FT.
Lined Waterway or Outlet	175.0 FT.
Livestock Pipeline	3,140.0 FT.
Mulching	1.0 AC.
Non-Streamside Fence	4,105.0 FT.
Nutrient Management	1,423.0 AC.
Pumping Plant	2.0 NO.
Residue & Tillage Management	172.0 AC.
Residue & Tillage Management	1,233.4 AC.
Riparian Forest Buffer	8.6 AC.
Roof Runoff Structure	8.0 NO.
Roof & Covers	2.0 NO.
Shallow Water Development	3.3 AC.
Storm Water Runoff Control	5.0 NO.
Stream Crossing	4.0 NO.
Stream Habitat Improvement	1.3 AC.
Streambank Protection	821.0 FT.
Streamside Fence (35' + Trees)	2,813.0 FT.
Streamside Fence (10'-34')	2,893.0 FT.
Structure for Water Control	1.0 NO.
Surface Drain, Field Ditch	10,474.0 FT.
Underground Outlet	3, 518.0 FT.
Upland Wildlife Habitat Management	3.4 AC.
Waste Storage Facility	2.0 NO.
Waste Transfer	3.0 NO.
Water Well	1.0 NO.
Watercourse Exclusion 10'	2,948.0 FT.
Watering Facility	9.0 NO.
Wetland Creation	0.5 AC.

## General Activities

- Conservation Planning
- BMP Design/Review
- Agricultural Preservation Programs
- BMP Verification Project
- District Nitrogen Use Efficiency Program
- Farmer Nutrient Management Workshop
- Nutrient Applicators Voucher Training
- Farm Stewardship Certification & Assessment Program
- Annual Cooperator Banquet
- Cecil County Fair & Ag Showcase Day Outreach
- Field Days & Demonstration Projects
- Community Drainage Maintenance
- District's Website, Facebook & YouTube
- MASCD/NACD Meetings & Activities
- Streambank & Shoreline Protection Education
- Watershed Implementation Plan

The community drainage ditches in the County are maintained by the District and are located in and around incorporated towns or populated areas. The District is responsible for over 11 miles of community ditches located in 14 drainage project areas. The annual operation and maintenance program includes inspection, mowing, spraying and structural repairs.



# URBAN CONSERVATION

## Conservation Planning & Agricultural Practices

Conservation Planned Acres	6,889 ac.
Conservation Plans	66
New Cooperators	25

### URBAN PRACTICES

Erosion & Sediment Control Plans Reviewed	265
Erosion & Sediment Control Plans Approved	214
Forest Harvest Plans Reviewed	24
Forest Harvest Plans Approved	24
Pre-Construction Meetings	8
Agricultural Storm Water Management/E&S Inspections	77



## COVER CROP.....

Cover crops are plants seeded into agricultural fields over winter to primarily improve and or maintain ecosystem quality. The cover crop uptakes nutrients into grain to make the nitrogen available to the new crop to follow in the spring and prevents soil erosion.

Seventy-seven farmers planted in excess of 22, 781 acres of crop in 2019 as traditional cover.

## AGRICULTURAL CONSERVATION

### Federal Conservation Financial Assistance

Total Statewide Funding	\$11,027,661
Cecil County Funding	\$ 501,893
Number of Contracts	20

### Federal Programs with USDA,NRCS & FSA

Conservation Stewardship Program (CSP) & Environmental Quality Incentive Program (EQIP)	\$467,977
Conservation Reserve Program (CRP) 188/Contracts/1730 Acres	\$335,345
Farm & Ranchland Protection Program (FRPP)	Undisclosed
USDA/FSA (DCP, MILC, ACRE,LOANS,DISASTER)	Undisclosed

### MACS REPORT 2019

Maryland Agricultural Cost-Share Capital	\$178,067
2018-2019 Cover Crop	\$693,760
Manure Transport	\$ 71,373
Manure Injection/Incorporation	\$ 44,397
2018-2019 Cover Crop applied for	\$1,584,050



# OUTREACH SPOTLIGHT



## Kiddie Academy in Elkton

Every year the district employees work together to put together over 93 treat bags for the local daycare. These bags consist of a small craft, fun information about Cecil Soil Conservation District and of course, a treat. We enjoy seeing all the different costumes and sharing what the district does for the Cecil County Community.



## Youth & Family Education

- Envirothon/County/State
- Cecil County "Wade In"
- Cecil County School of Technology Soils Pit
- Conservation Tours
- Cooperator of the Year
- District's 4th Grade Soil and Water Education Program
- District Coloring Contest
- Elementary Conservation Education Programs
- Fair Hill Nature Center
- Boy Scouts of America
- Agricultural Preservation & Estate Planning
- Maryland Public Television
- Octoraro Watershed Association

## *Cecil County School of Technology*

District Technician, Jessica Zebley presented at the Cecil County School of Technology on Career Day. It was a great opportunity to answer questions about different career paths in agriculture.





# EDUCATION & OUTREACH

## Envirothon

Cecil Soil Conservation District sponsors and hosts the annual Cecil County Envirothon. Envirothon is a series of trainings and competitions in which students from area high schools solve real-life, interactive, environmental problems in a natural setting. This event encourages the spirit of competition to educate high school students about natural resources. Topics students learn about and compete in are wildlife, aquatics, forestry, soils, and a current issue. This year's current issue was Agriculture and the Environment: knowledge and technology to feed the world. Five teams competed from four Cecil High Schools. Tome School Team 1 earned first place in the county competition.



## Annual Wade In

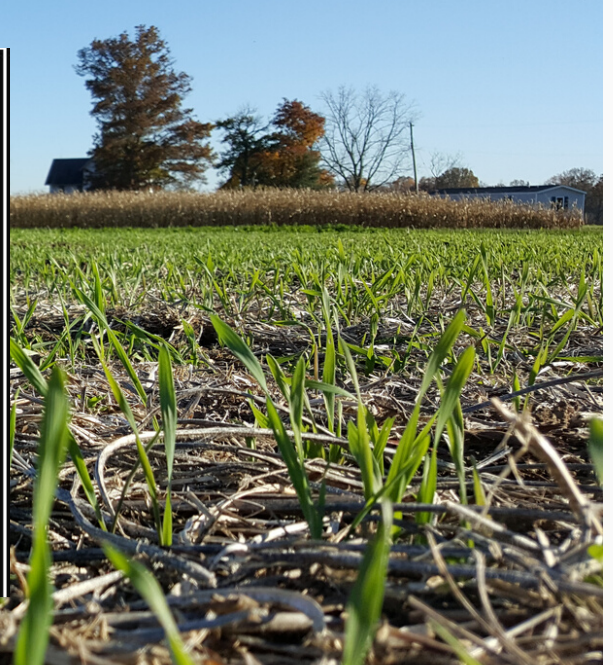
Cecil County's 11th Annual Wade-In took place in Charlestown on June 15th. It was a sunny day where people perused exhibits about topics including The Chesapeake Bay, water quality, natural resources and citizen action. Exhibits containing live animals were especially popular and every attendee received a shirt. A great day for the residents of Cecil County to come together and enjoy the outdoors.





Without love of the land,  
conservation lacks meaning or  
purpose, for only in a deep and  
inherent feeling for the land can  
there be dedication in preserving it.

— Sigurd F. Olson —



## OUTSTANDING COOPERATOR OF THE YEAR **ALBECK FARMS, INC.**



Albeck Farms became a cooperator with the Cecil Soil Conservation District in 1959. Conservation efforts began with the installation of the first waste treatment lagoon in Maryland. Efforts continued with the planting of a riparian buffer along with over 3,000 ft of fence to exclude livestock from the stream. Additional BMPs include diversions, waterways, tile drainage, and wildlife areas. Agronomic BMP's such as the annual use of cover crops, contour farming, and nutrient management have been used to enhance and preserve the soil and improve water quality. Albeck Farms continues with the legacy of commitment to the conservation and preservation of their scenic farm in Cecil County. The Cecil Soil Conservation District proudly recognizes Albeck Farms, for being committed to the sustainability of their family farm with the wise use and conservation of the natural resources.



Visit us at [www.cecilscd.com/agriculture.htm](http://www.cecilscd.com/agriculture.htm) to view past years videos displaying outstanding conservation and interesting family history in the County.



# CECIL SOIL CONSERVATION DISTRICT



## BOARD OF SUPERVISORS

---

J. BRUCE YERKES, CHAIRMAN  
WILLIAM EWING, VICE-CHAIRMAN  
VAN FUNK, TREASURER  
VICTOR PRIAPI, MEMBER  
JONATHAN QUINN, MEMBER  
SEAN MCCANDLESS, ASSOCIATE

## COUNTY STAFF

---

CHRIS BROWN, DISTRICT MANAGER  
RYAN FISHER, SOIL CONSERVATIONIST  
MARI MARKKULA, SOIL CONSERVATIONIST  
PATTY PIERCE, ADMINISTRATIVE ASSISTANT  
TRACEY RACH, FINANCIAL COORDINATOR

## MDA STAFF

---

DAN POLITE, ENGINEERING TECHNICIAN

## USDA/NRCS STAFF

---

ROB WEAVER, DISTRICT CONSERVATIONIST  
WILLIAM METCALF, SOIL CONSERVATIONIST  
CHRISTOPHER DAVIDSON, CIVIL ENGINEER  
TECH  
ELIZABETH JAMISON, PROGRAM SUPPORT  
SPECIALIST  
TYLER WITKOWSKI, SOIL CONSERVATIONIST

## DISTRICT STAFF

---

JESSICA ZEBLEY, CONSERVATION  
TECHNICIAN

## HISTORY

THE CECIL SOIL CONSERVATION DISTRICT (CSCD) WAS FORMALLY ORGANIZED ON JUNE 26, 1945 UNDER A CHARTER SIGNED BY MARYLAND'S SECRETARY OF STATE. ON AUGUST 27, 1945, A MEMORANDUM OF UNDERSTANDING (MOU) WAS ENTERED INTO BETWEEN CSCD AND USDA'S SOIL CONSERVATION SERVICE (NOW, THE NATURAL RESOURCES CONSERVATION SERVICE). SINCE THAT TIME, THE CSCD HAS EXPANDED ITS PRIMARY CONSERVATION PARTNERS TO INCLUDE MARYLAND, CECIL COUNTY GOVERNMENT, THE MARYLAND DEPARTMENT OF AGRICULTURE AND MANY OTHERS. THE DISTRICT'S SERVICES FACILITATE THE IMPLEMENTATION OF STRUCTURAL AND AGRONOMIC BEST MANAGEMENT PRACTICES (BMP'S) ON AGRICULTURAL, RESIDENTIAL AND COMMERCIALY DEVELOPING LANDS. BMP'S PROTECT WATER QUALITY, REDUCE SOIL EROSION, ENHANCE FARM EFFICIENCIES, AND HAVE MANY POSITIVE ECONOMIC AND ENVIRONMENTAL BENEFITS. THE DISTRICT PROMOTES WISE LAND USE PLANNING, ENVIRONMENTAL SITE DESIGN, EROSION AND SEDIMENT CONTROL, SMART GROWTH, ECONOMIC DEVELOPMENT, AGRICULTURAL LAND PRESERVATION AND THE PROTECTION OF CECIL COUNTY'S PRIMARY INDUSTRY THROUGH SUSTAINABLE AGRICULTURE.

THE DISTRICT OFFERS SOIL CONSERVATION & WATER QUALITY PLANS WHICH ARE CUSTOM DEVELOPED TO PROVIDE FARMERS AND LANDOWNERS WITH A BLUE PRINT FOR PROTECTING THEIR NATURAL RESOURCES WHILE SEEKING TO KEEP THEIR AGRICULTURAL OPERATION SUSTAINABLE.

THE DISTRICT ADMINISTERS AND PROVIDES TECHNICAL ASSISTANCE FOR THE MARYLAND AGRICULTURAL WATER QUALITY COST-SHARE PROGRAMS AND MANY OTHER USDA FARM BILL PROGRAMS SUCH AS THE CONSERVATION STEWARDSHIP PROGRAM, ENVIRONMENTAL QUALITY INCENTIVE PROGRAM, THE CONSERVATION RESERVE ENHANCEMENT PROGRAM, WETLAND RESERVE EASEMENT PROGRAM, AGRICULTURAL MANAGEMENT ASSISTANCE, AND THE AGRICULTURAL CONSERVATION EASEMENT PROGRAM.